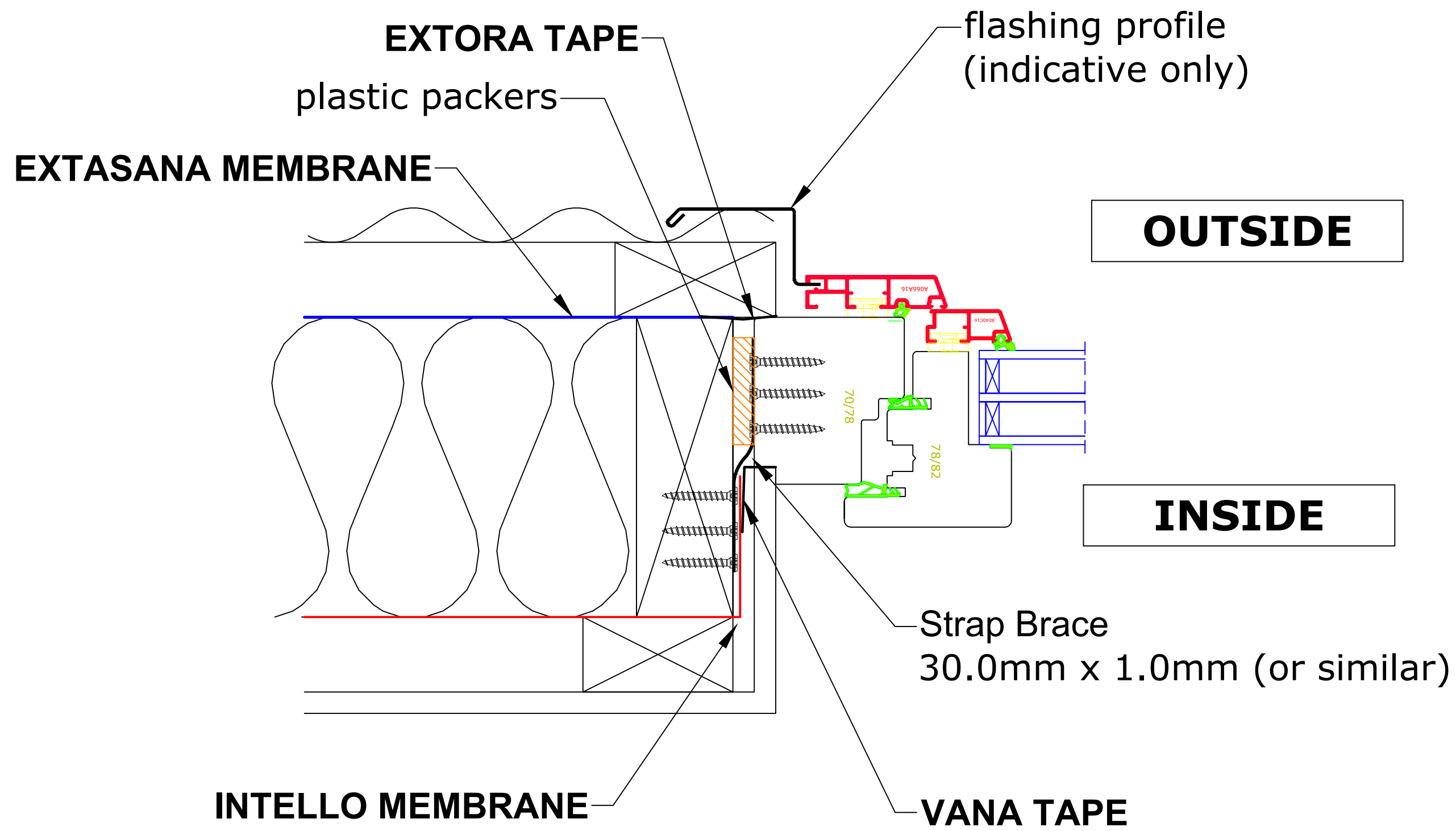
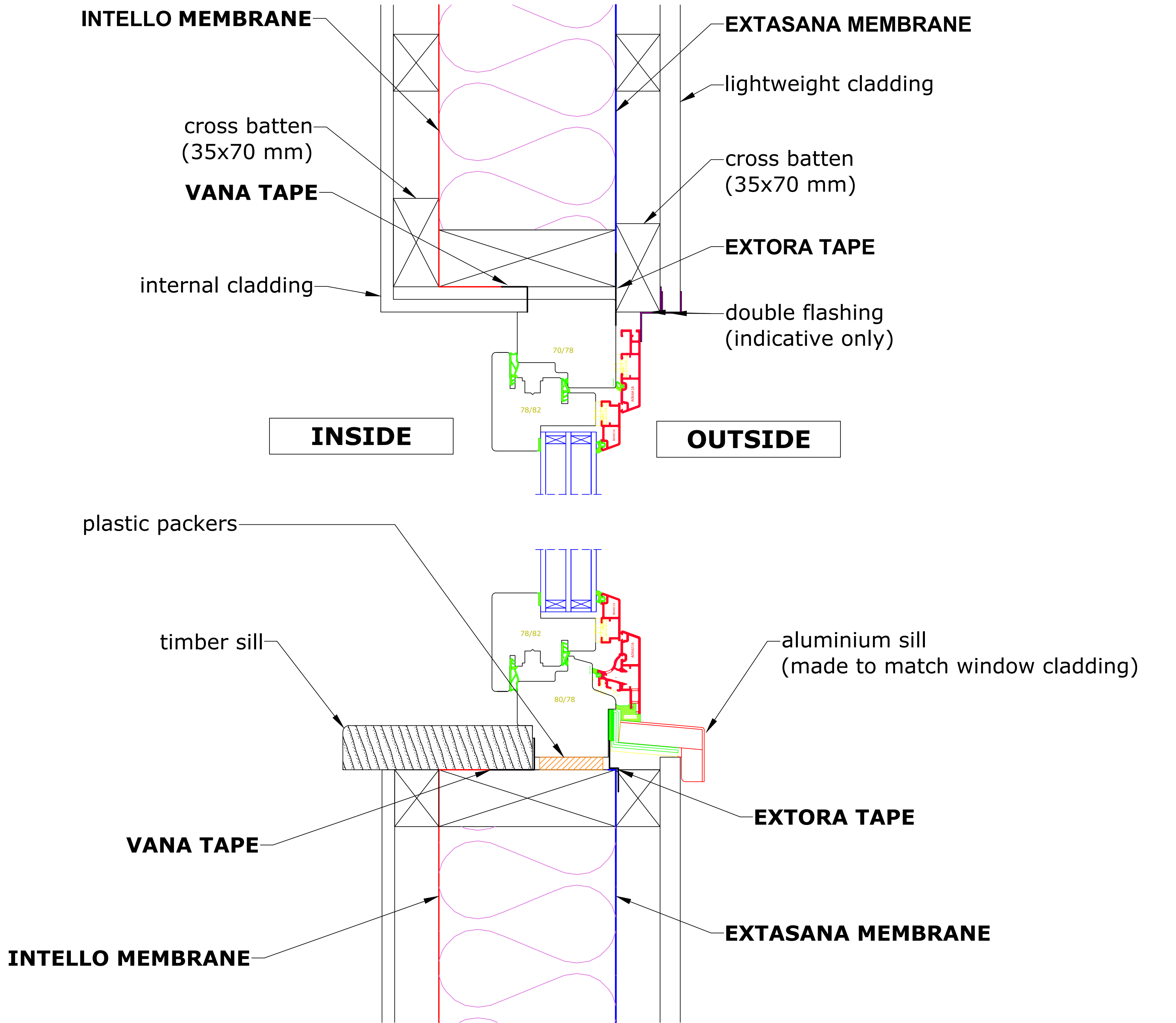


- Design 10mm perimeter gap around window frame
- Screw fix strap braces to window jambs as shown (B-B)
  - Minimum 2 per jamb, 150 mm from corners
  - Maximum spacing 800 mm
  - For units wider than 1800 mm add bracing to head as well. Do not put load onto head.
  - Add bracing above mullion of openable part.
- Level window frame on packers and screw fix strap braces into jambs (refer to sketch above and B-B)
- Check to ensure window/door functionality in situ. Adjust as needed.
- Once ready, fill voids around the frame and between the packers with **No-warp Foam** (or sim.)
- Tape interior (use vana) and exterior (use extora) window perimeter to ensure an air tight seal (sections A-A, B-B)
- Install appropriate flashings to sill, jambs and head
  - Ensure window frames and building interior are protected from driving rain and pooling effects)
  - Ensure that jamb flashing will drain into the sill flashing
  - **Ensure water drainage pathway is clear** (see insert)

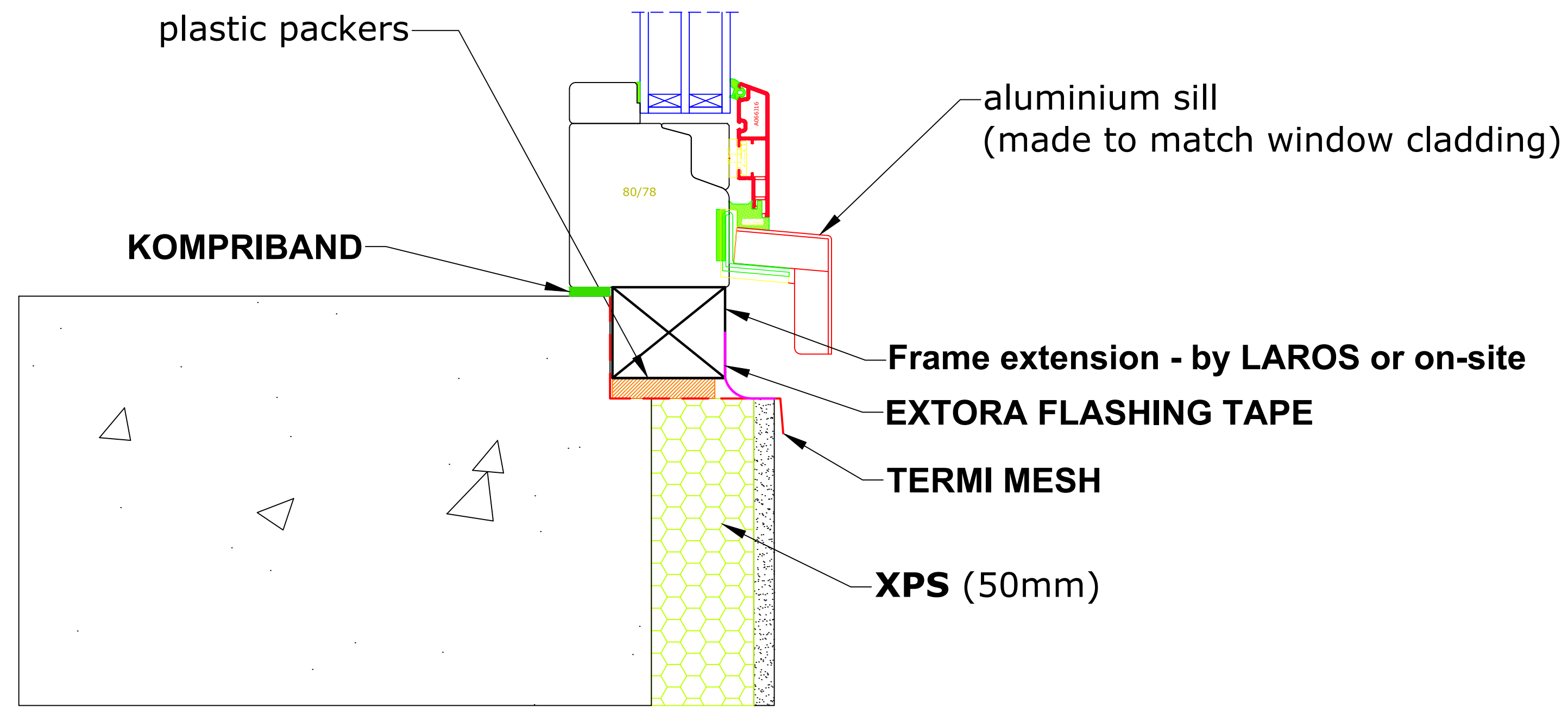
**PLEASE NOTE:**  
Flashing profiles shown are indicative only, correct profiles to suit the wall type to be determined by the builder/installer



**HORIZONTAL SECTION B-B (JAMB)**



**OPTION 1: PARTIAL HEIGHT WINDOW**



**OPTION 2: FULL HEIGHT WINDOW (LOWER SECTION ONLY)**  
[\*UPPER SECTION SAME AS OPTION 1]

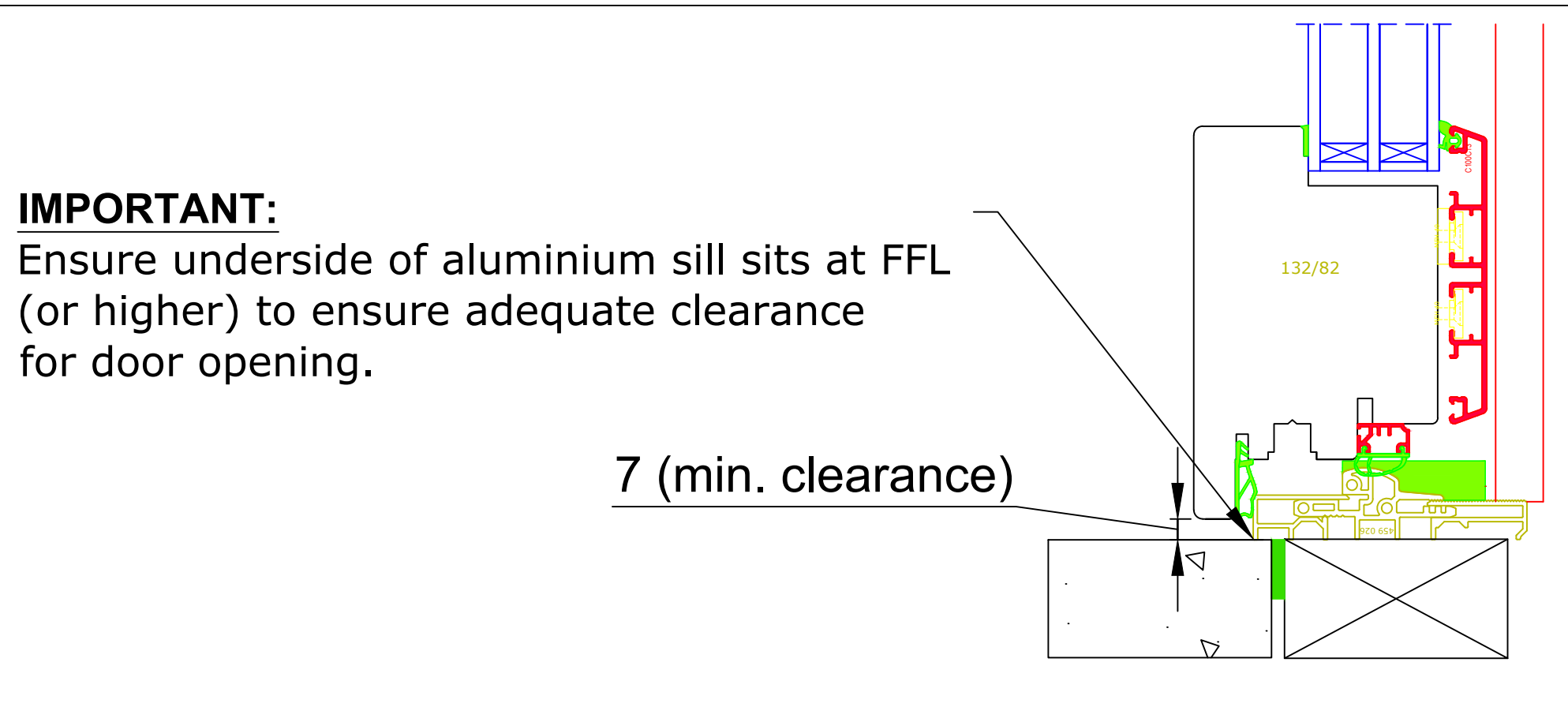
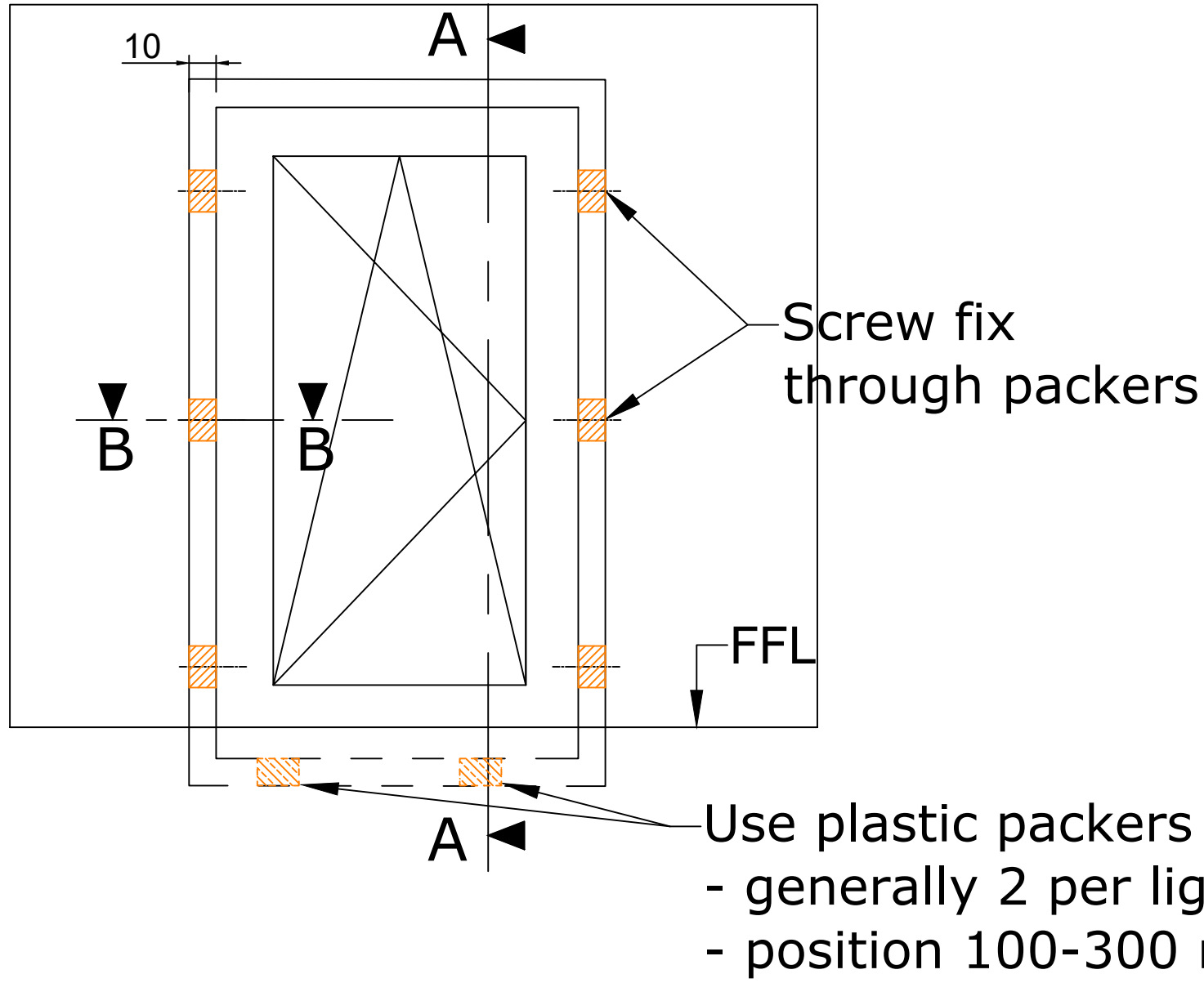
**PASSIVE HOUSE COMPONENTS**

<b>INTELLO MEMBRANE</b> Airtight, vapour-permeability variable interior building wrap	<b>EXTORA TAPE</b> Airtight air-sealing tape for exterior applications
<b>EXTASANA MEMBRANE</b> Airtight, vapour-permeable exterior building wrap	<b>XPS</b> Extruded polystyrene - for slab insulation
<b>VANA TAPE</b> Airtight air-sealing tape for interior applications	<b>All products available from LAROS Technologies</b>

**VERTICAL SECTION A-A**

			D	05-02-2019	FOR GENERAL ADVICE	CLIENT	GENERAL	<b>LAROS</b> TECHNOLOGIES
			C	02-09-2018	FOR GENERAL ADVICE	PROJECT	DOEPFNER INSTALL GUIDES	
			B	22-03-2018	FOR GENERAL ADVICE	DRAWING TITLE	TILT & TURN - LIGHTWEIGHT WALL	
			A	15-08-2017	FOR GENERAL ADVICE	DRAWN:	CS, TY	
			0	17-05-2017	FOR GENERAL ADVICE	SCALE	SHT.SIZE	
REV.	DATE	DETAILS & STATUS	REV.	DATE	DETAILS & STATUS	1:2	A0	DI-100
								2/5 Bodalla Place Fyshwick ACT 2609. Ph. (02)6240 2900 Email: info@laros.com.au Web: www.laros.com.au



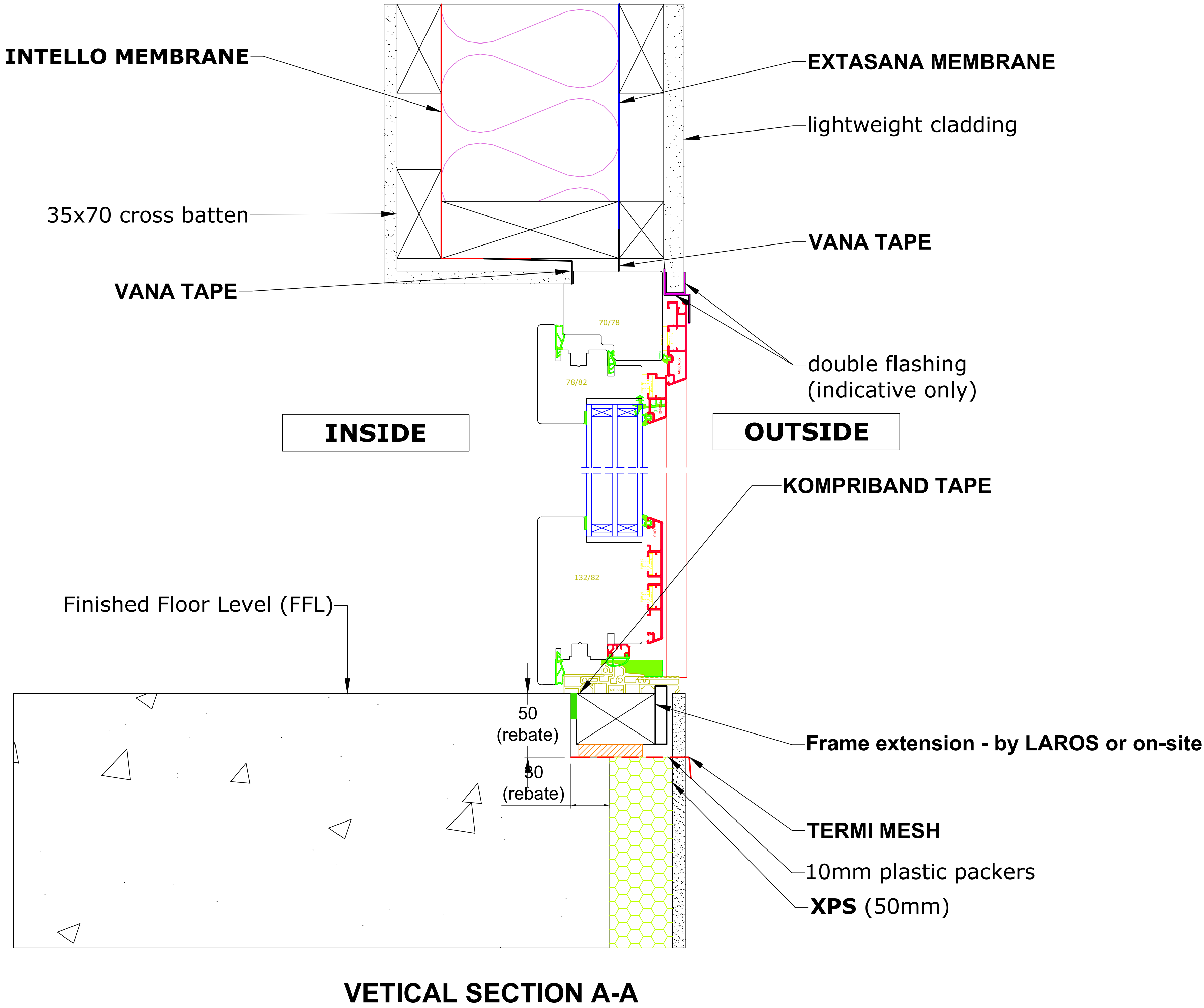
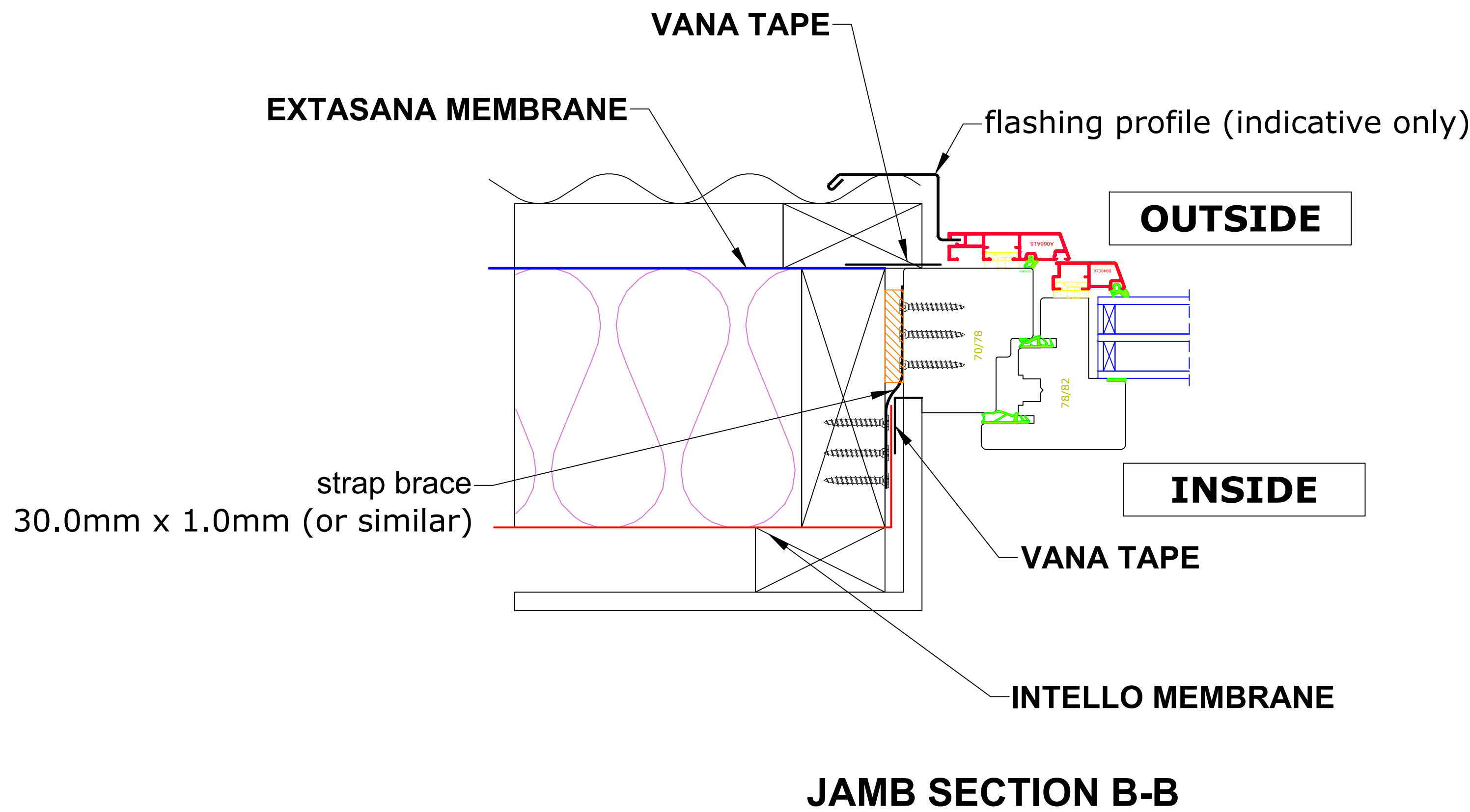


**IMPORTANT:**  
Ensure underside of aluminium sill sits at FFL (or higher) to ensure adequate clearance for door opening.

**INSTALLATION NOTES**

- Ensure available rebate of at least 50 x 100 mm as shown (A-A)
- Design 10mm perimeter gap around jambs and head
- Screw fix strap braces to window jambs as shown (B-B)
  - Minimum 2 per jamb, 150 mm from corners
  - Maximum spacing 800 mm
  - For units wider than 1800 mm add bracing to head as well. Do not put load onto head.
  - Add bracing above mullion of openable part.
- Level window frame on packers and screw fix strap braces into jambs (refer to sketch above and B-B)
- Check to ensure window/door functionality in situ. Adjust as needed.
- Once ready, fill voids around the frame and between the packers with **No-warp Foam** (or sim.)
- Tape interior (use vana) and exterior (use extora) window perimeter to ensure an air tight seal (sections A-A, B-B)
- Install appropriate flashings to jambs and head
  - Ensure door frame and building interior are protected from driving rain and pooling effects

**PLEASE NOTE:**  
Flashing profiles shown are indicative only, correct profiles to suit the wall type to be determined by the builder/installer



**PASSIVE HOUSE COMPONENTS**

**INTELLO MEMBRANE**  
Airtight, vapour-permeability variable interior building wrap

**EXTASANA MEMBRANE**  
Airtight, vapour-permeable exterior building wrap

**VANA TAPE**  
Airtight air-sealing tape for interior applications

**EXTORA TAPE**  
Airtight air-sealing tape for exterior applications

**XPS**  
Extruded polystyrene - for slab insulation

**All products available from LAROS Technologies**

						CLIENT	GENERAL	<b>LAROS</b> TECHNOLOGIES
						PROJECT	DOEPFNER INSTALL GUIDES	
			B	05-02-2019	FOR GENERAL ADVICE	DRAWING TITLE	TILT & TURN (BALCONY DOOR) - LIGHTWEIGHT WALL	
			A	02-09-2018	FOR GENERAL ADVICE	DRAWN:	CS, TY	
			0	17-05-2017	FOR GENERAL ADVICE	SCALE	SHT.SIZE	Fyshwick ACT 2609. Ph. (02)6240 2900
REV.	DATE	DETAILS & STATUS	REV.	DATE	DETAILS & STATUS	1:2	A0	Email: info@laros.com.au
								Web: www.laros.com.au

**DI-104**

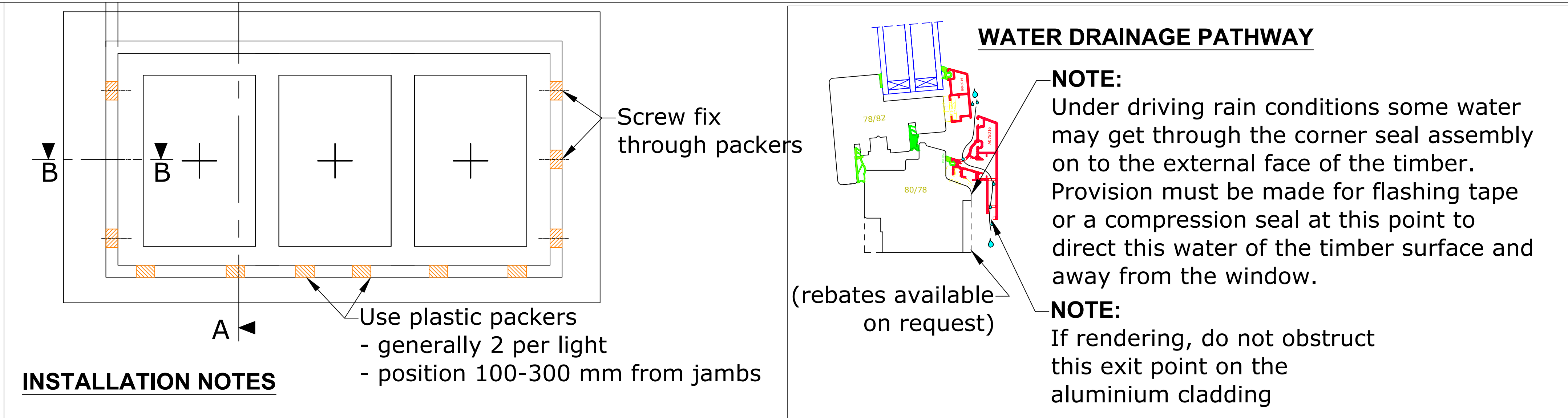








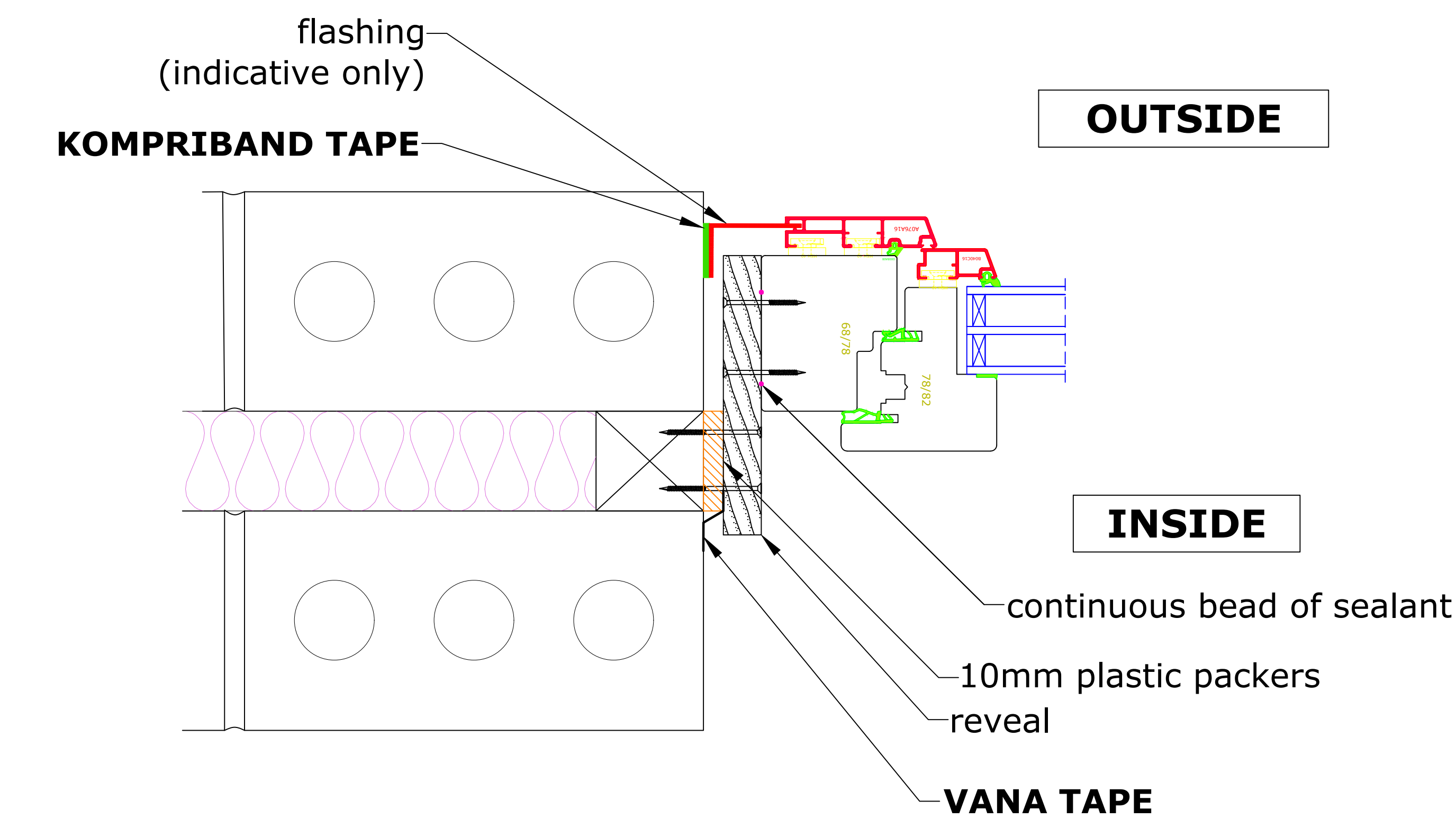




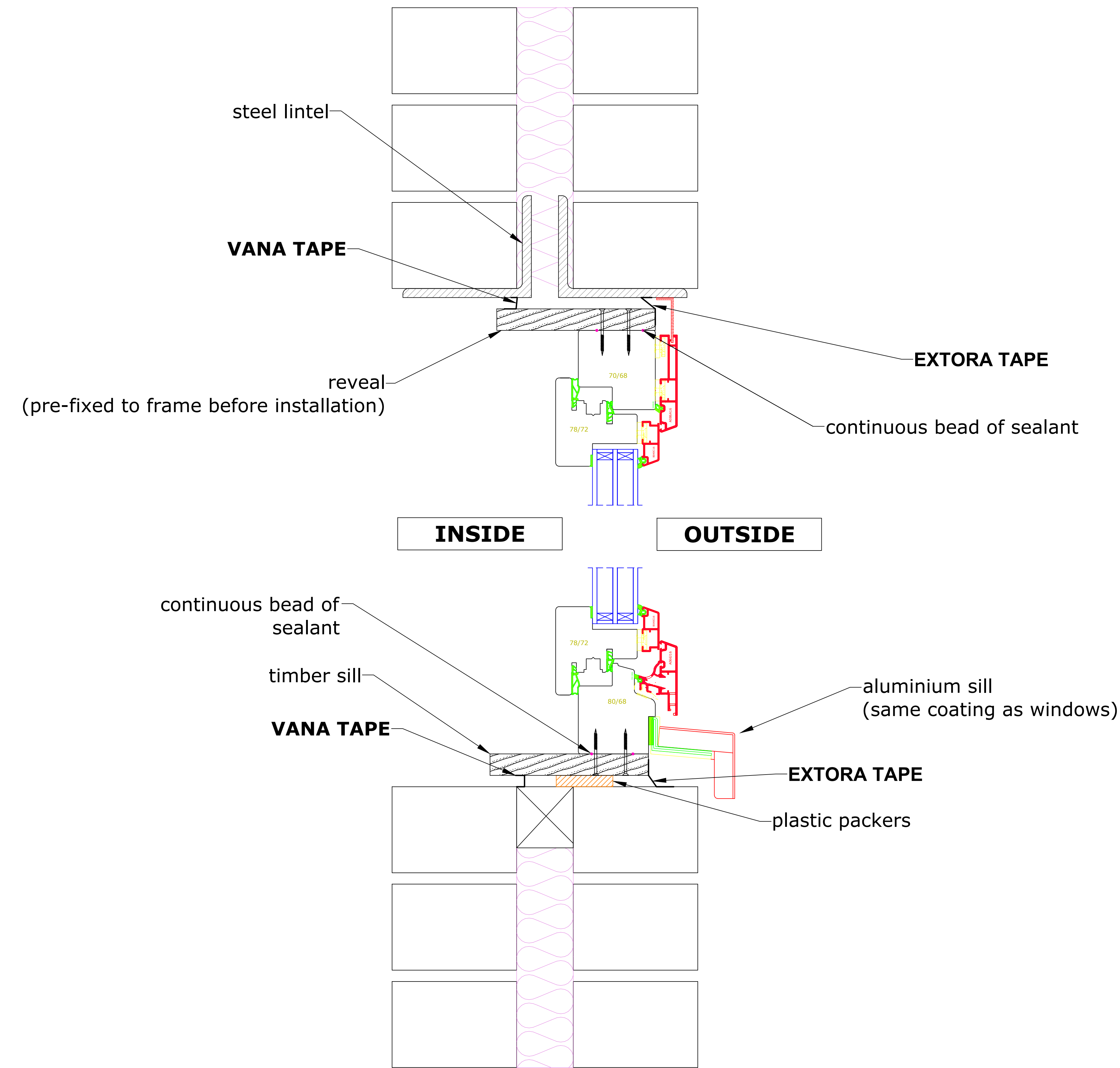
**INSTALLATION NOTES**

- Design 29mm perimeter gap around window frame (10mm clearance + 19mm reveal)
- Screw fix reveals to window jambs as shown (B-B)
- Level window frame on packers and screw fix reveals into jambs (refer to sketch above and B-B)
- Check to ensure window/door functionality in situ. Adjust as needed.
- Once ready, fill voids around the frame and between the packers with **No-warp Foam** (or sim.)
- Tape interior (use vana) and exterior (use extora) window perimeter to ensure an air tight seal (sections A-A, B-B)
- Install appropriate flashings to sill, jambs and head
  - Ensure window frames and building interior are protected from driving rain and pooling effects)
  - Ensure that jamb flashing will drain into the sill flashing
  - **Ensure water drainage pathway is clear** (see insert)

**PLEASE NOTE:**  
Flashing profiles shown are indicative only, correct profiles to suit the wall type to be determined by the builder/installer



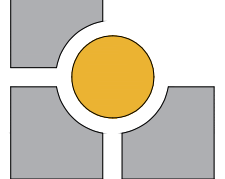
**JAMB SECTION B-B**



**VERTICAL SECTION A-A**

**PASSIVE HOUSE COMPONENTS**

<b>INTELLO MEMBRANE</b> Airtight, vapour-permeability variable interior building wrap	<b>EXTORA TAPE</b> Airtight air-sealing tape for exterior applications
<b>EXTASANA MEMBRANE</b> Airtight, vapour-permeable exterior building wrap	<b>XPS</b> Extruded polystyrene - for slab insulation
<b>VANA TAPE</b> Airtight air-sealing tape for interior applications	<b>All products available from LAROS Technologies</b>

						CLIENT	GENERAL	<b>LAROS</b> TECHNOLOGIES 
						PROJECT	DOEPFNER INSTALL GUIDES	
			B	22-03-2018	FOR GENERAL ADVICE	DRAWING TITLE	TILT & TURN - DOUBLE BRICK WALL	
			A	15-08-2017	FOR GENERAL ADVICE	DRAWN:	CS, TY	
			0	17-05-2017	FOR GENERAL ADVICE	SCALE	SHT.SIZE	
REV.	DATE	DETAILS & STATUS	REV.	DATE	DETAILS & STATUS	1:2	A0	DRAWING NO. <b>DI-102</b>
								Email: info@laros.com.au Web: www.laros.com.au